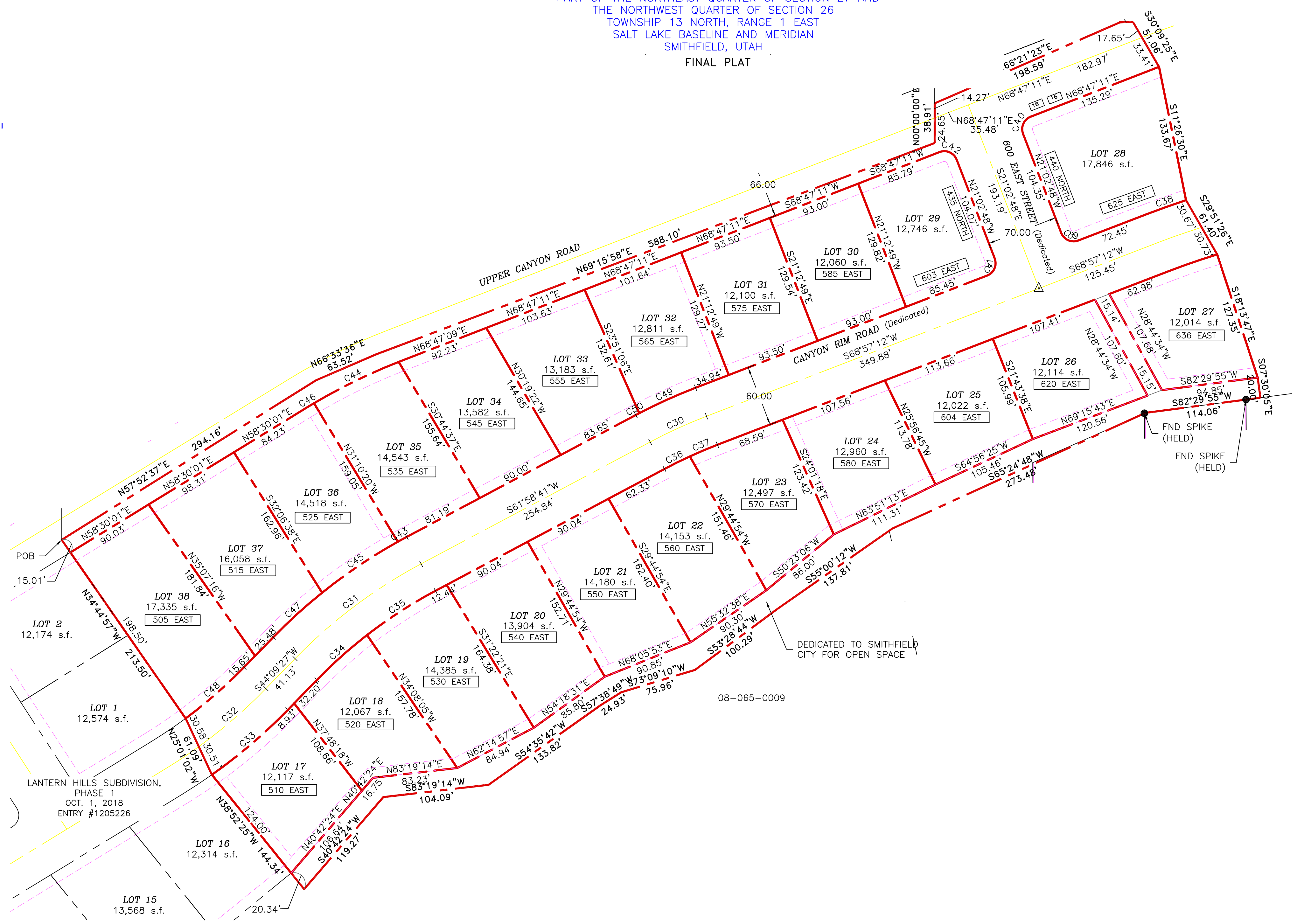


LANTERN HILLS SUBDIVISION, PHASE 2

PART OF THE NORTHEAST QUARTER OF SECTION 27 AND
THE NORTHWEST QUARTER OF SECTION 26
TOWNSHIP 13 NORTH, RANGE 1 EAST
SALT LAKE BASELINE AND MERIDIAN
SMITHFIELD, UTAH
FINAL PLAT

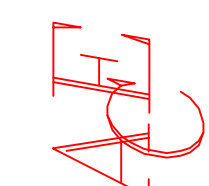


LANTERN HILLS SUBDIVISION,
PHASE 1
OCT. 1, 2018
ENTRY #1205226

08-065-0009

OWNER:
Lantern Hills, LLC
1035 E. RSH Dr.
Logan, Utah 84321

ALLIANCE CONSULTING ENGINEERS
150 EAST 200 NORTH SUITE P
LOGAN, UTAH 84321
(435)755-5121
alliance@alliance-engineers.com



No.	REVISIONS / SUBMISSIONS	DATE

REVIEWED: _____ DRAWN: _____
CAD FILE: _____ PROJECT NO.: _____

LANTERN HILLS SUBDIVISION, PHASE 2
PART OF THE NORTHEAST QUARTER OF SECTION 27
AND
THE NORTHWEST QUARTER OF SECTION 26
TOWNSHIP 13 NORTH, RANGE 1 EAST
SALT LAKE BASELINE AND MERIDIAN
SMITHFIELD, UTAH
FINAL PLAT

DATE: NOV, 2017
DRAWING No. 1